

THE SOPIX SERIES

DIGITAL RADIOLOGY SENSORS
SOPIX & SOPIX²

A SUCCESSFUL X-RAY
EVERY TIME WITH
**MINIMAL EXPOSURE
TO RADIATION**

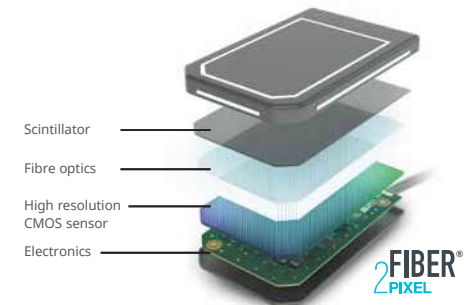


WINDOWS
COMPATIBLE

Equipped with ACE technology, the SOPIX SERIES are the unique digital sensors providing you perfect X-ray the first time and every time.

Striking contrast for a more reliable diagnosis

Thanks to the use of **broad spectrum optical microfibers**, the **different tooth anatomic structures**, such as the bone, roots, pulp... are highlighted with **extreme precision** on the image.



Smart design for better comfort

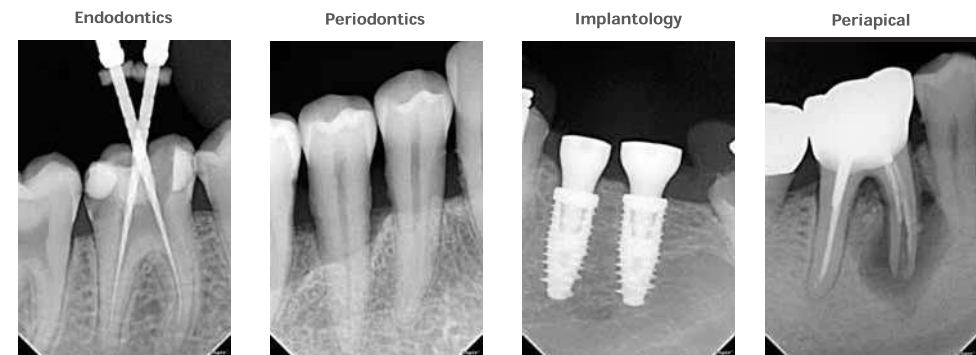
Two sizes are available depending on **patient morphology and clinical applications**.
Rounded edges and corners for improved **patient comfort**.
White side stripes ensure **high visibility** of the sensor in the dark area of the mouth.



No more overexposed images

Available on all SOPIX series sensors, the patented ACE technology freezes the image during acquisition **to protect it from over-exposure**.

Acquire perfect image the first time and every time!



THE SOPIX SERIES

DIGITAL RADIOLOGY SENSORS
SOPIX INSIDE & SOPIX² INSIDE



STOP
EXCESSIVE RADIATION



Patient and staff are protected from excessive radiation thanks to the unique communication between the X-Mind[®] unity and SOPIX[®] inside.

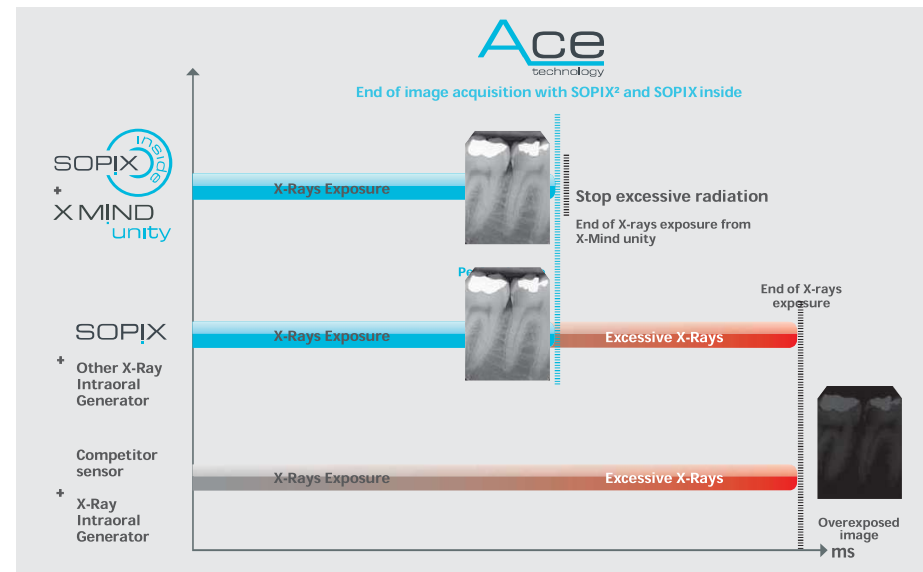


SOPIX² inside is directly integrated into the X-Mind unity intraoral X-ray system and makes the protection of the patient our utmost priority.

Effective protection for minimal exposure

The patient only receives the necessary dose adapted for their dental morphology, which **protects them from unnecessary exposure**.

When SOPIX inside has received enough energy to provide an **exceptional image quality**, it tells the X-Mind unity to **stop the X-ray emission**.



Exclusive traceability

SOPRO Imaging systematically records the X-Mind unity settings as well as the effective dose received by the patient for each acquisition.

Outstanding working comfort

Through direct integration of SOPIX inside into X-Mind unity, **connecting cables are hidden** inside the X-ray unit and the holder places the sensor **safely at easy reach**.